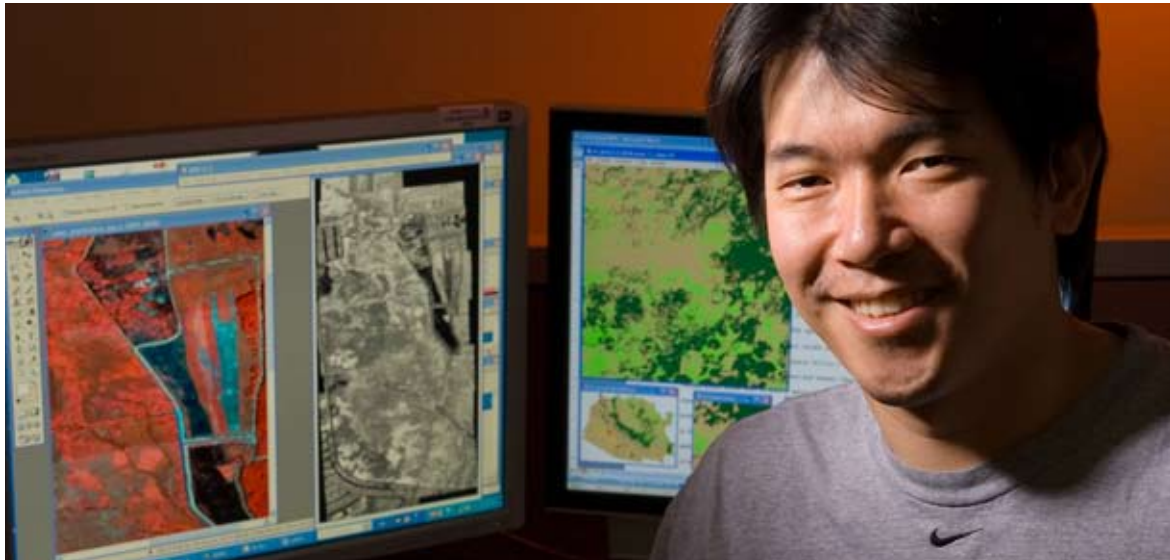




National
Exposure
Research
Laboratory



POST-DOCTORAL RESEARCH PROGRAM

The National Exposure Research Laboratory (NERL) of the United States Environmental Protection Agency is accepting applications beginning November 2, 2009 through January 11, 2010 for approximately 10 federal, three-year post-doctoral research positions.

Candidates will engage in research in areas such as: computer modeling of the transport, transformation, and fate of pollutants in multiple media and at multiple scales, hydrologic modeling, GIS mapping and interpretation for human exposure, demographics related to ecological exposure, modeling of microbial fate and exposure, exposure modeling for epidemiological studies, and bioinformatics related to microbial and ecological stressors.

Specific research opportunities and application instructions will be posted in November on the NERL website at <http://www.epa.gov/nerl>

Post-doctoral positions will be in one or more of the following locations: Research Triangle Park, North Carolina; Cincinnati, Ohio; Las Vegas, Nevada; or Athens, Georgia.

FULL FEDERAL EMPLOYMENT BENEFITS

- Salary range of **\$67,613 - \$91,305** (subject to increase in January 2010)
- Full **three-year** appointments
- Paid relocation to EPA duty location
- Vacation and sick leave
- Federal health benefits, life insurance, and retirement program
- Travel to professional and scientific meetings
- Flexible start date beginning in March/April and no later than September 2010

The U.S. Environmental Protection Agency is an Equal Opportunity Employer.

NERL

